

EASY TRANSIT

INSTALLATION GUIDE



This is a step-by-step installation guide developed to ensure that installations of Easy Transit are carried out correctly. For detailed information, see associated product installation drawings.

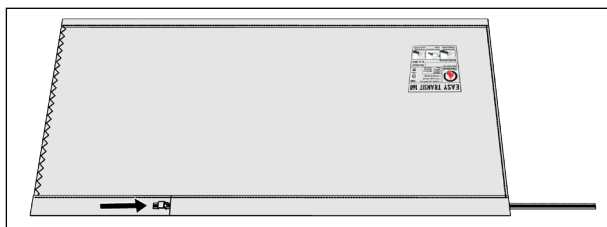


The protrusion of the wrap can be 100 - 300mm / 3,93 - 11,81in

	Max hole size deck / bulkhead
Easy Transit 80	Ø 90mm / 3,54in
Easy Transit 160	Ø 185mm / 7,28in

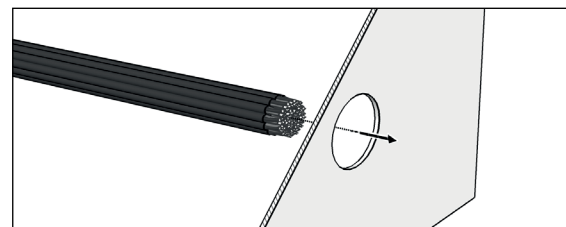
Note! Make sure not to damage the wrap. The weight of the cables must be supported on both sides of the Easy Transit. Approvals or certificates may include amendments or limitations related to this application. The latest version of this and related documents can be found at fireseal.com.

STEP 1



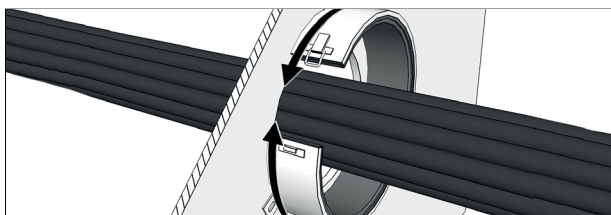
Prepare the wrap and one metal cable tie. Insert the metal cable tie in the pre-cut opening in the wrap.

STEP 2



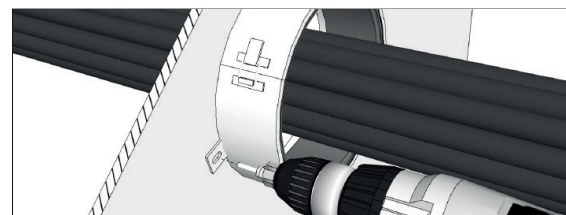
Cut hole in division. Pull the cables before or after the Easy Transit has been installed.

STEP 3



Place the graphite collar over the cables and lock it.

STEP 4



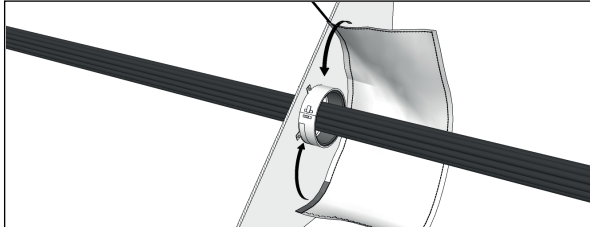
Fasten the graphite collar to the bulkhead or deck with the enclosed self-taping screws. To be installed on one side only.

EASY TRANSIT

INSTALLATION GUIDE

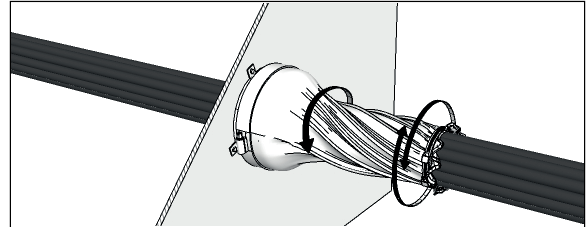


STEP 5



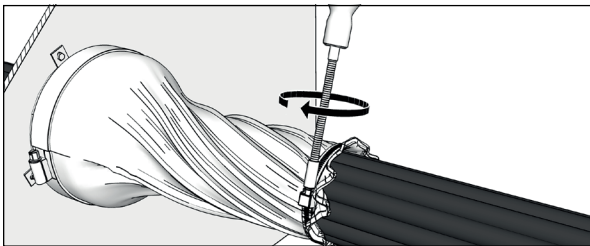
Take the openable wrap, remove the film from the tape and place it on the collar. Secure the wrap with the supplied cable tie.

STEP 6



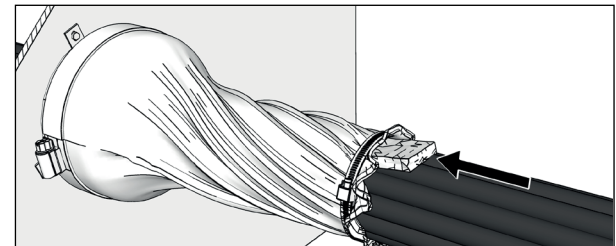
Twist the end of the fireproof wrap counter-clockwise and push it against the collar to create a smoketight penetration.

STEP 7



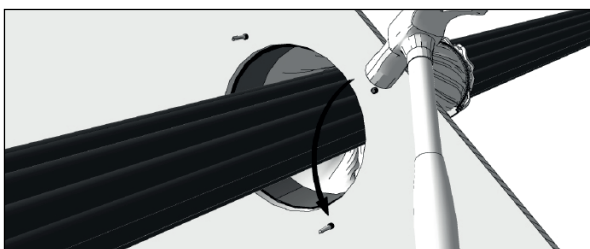
Secure the fireproof wrap with the supplied cable tie. Use a Hex 7mm/Ph2 screwdriver.

STEP 8



Fill any gaps between cables and/or cable and the wrap with enclosed Marine Blanket. The spare Marine Blanket is placed inside the wrap.

STEP 9



To avoid cut hazard, it is optional to remove the drilling tip by using a pliers, hammer or a pipe with an inner diameter of $\varnothing 6\text{mm}$.

INSTALLATION FILM

Read the QR code with your phone's camera or visit
<https://fireseal.com/easytransit3dfilm/>

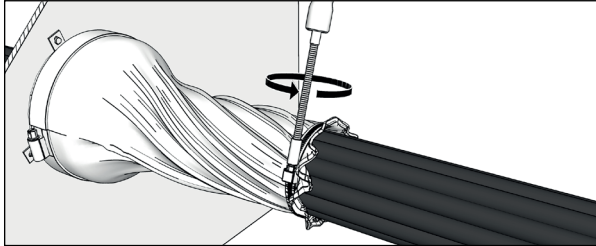




EASY TRANSIT

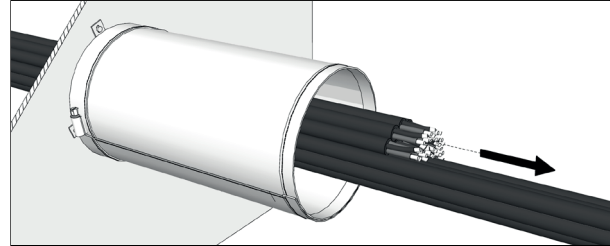
RETROFIT GUIDE

RETROFIT STEP 1



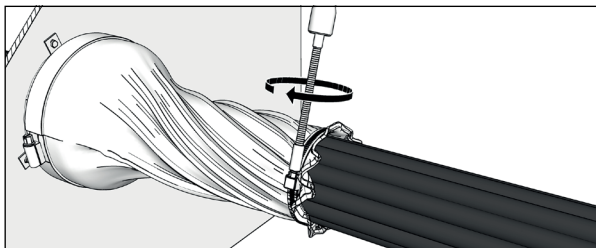
Remove or loose the cable tie holding the cables.

RETROFIT STEP 2



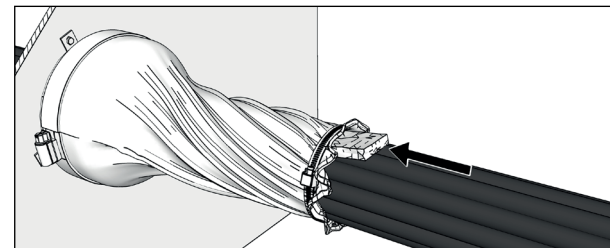
Add or remove the cables

RETROFIT STEP 3



Secure the cable tie over the cables

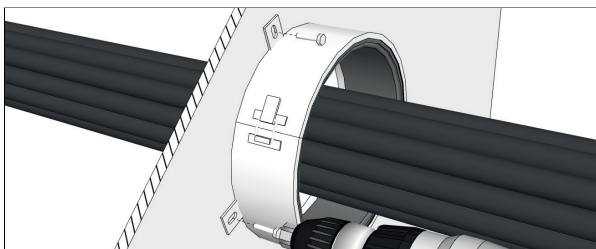
RETROFIT STEP 4



Fill any gaps between cables and/or cable and the wrap with enclosed Marine Blanket. The spare Marine Blanket is placed inside the wrap.

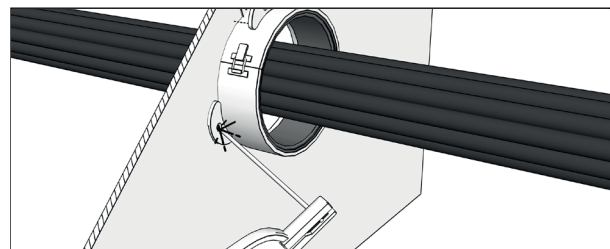
FIXING ALTERNATIVES

FIXING ALTERNATIVE 1



Fasten the graphite collar to the bulkhead or deck with the enclosed self-taping screws.

FIXING ALTERNATIVE 2



Fasten the graphite collar to the bulkhead or deck by welding. Use FireSeals welding lugs.